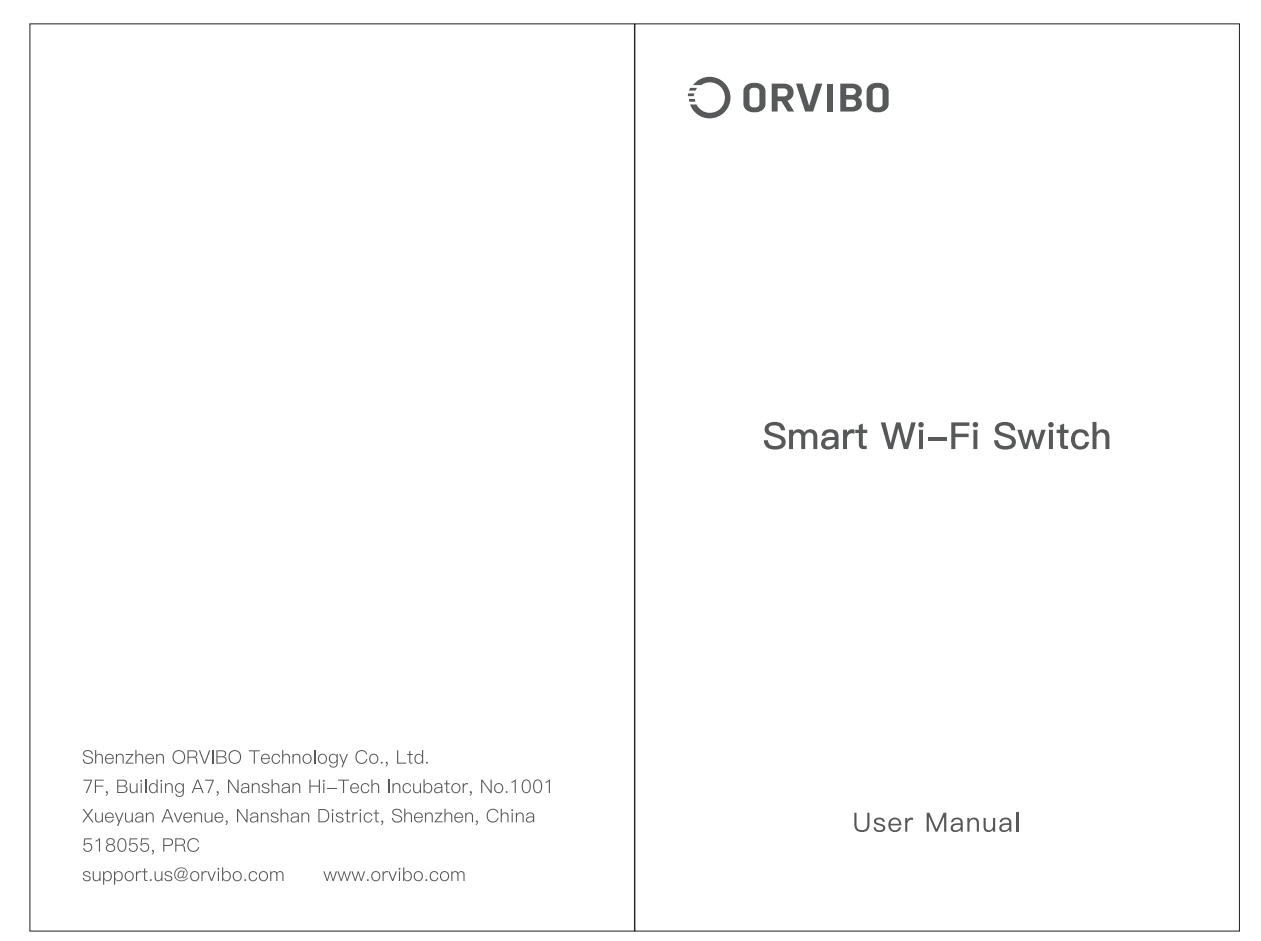


DEG. DIV.	ANGLE			
	A	B	C	D
0~5	±0.02	±0.05	±0.1	±0.2
5~10	±0.05	±0.1	±0.15	±0.5
10~50	±0.1	±0.15	±0.2	±0.5
50~500	±0.15	±0.2	±0.25	±0.5
500~	±0.15%	±0.2%	±0.25%	±1.0

版次	修改内容	修改	审核	批准	日期
V0.1	第一次发行				



Product Description

ORVIBO Smart Wi-Fi Switches can replace traditional single-pole switches, enabling remote control from anywhere with your smart phone app. You could create the automation for the switch by setting the timer schedules, sunrise/sunset, or together with compatible ORVIBO smart home products.

It adopts a Wi-Fi communication protocol and also can work with Amazon Alexa, Google Assistant, and Siri voice. The switch is for indoor use only. The neutral wire is required. It works with single-pole switches, not with 3-way switches or dimmer switches.

Any help needed, please contact us by support@orvibo.com
Support <https://www.orvibo.com/en/support>

Contents

- Packing List 04
- Specification 05
- Installation - A10 Smart Wi-Fi Switch 06
- Download App and Register 13
- Add Device and Configuration 14
- Utilize the App Feature 15
- Voice Control Via Siri 20
- Support Amazon Alexa and Google Home 21
- FAQ 22
- Warranty Coverage 23
- FCC 25

Packing List

- Smart Wi-Fi Switch x1
- Bracket x1
- Logo Sticker x1
- User Manual x1
- Wire Connector x4
- Screw x2
- Screw x2

Specification

Turn on Light
Turn off Light

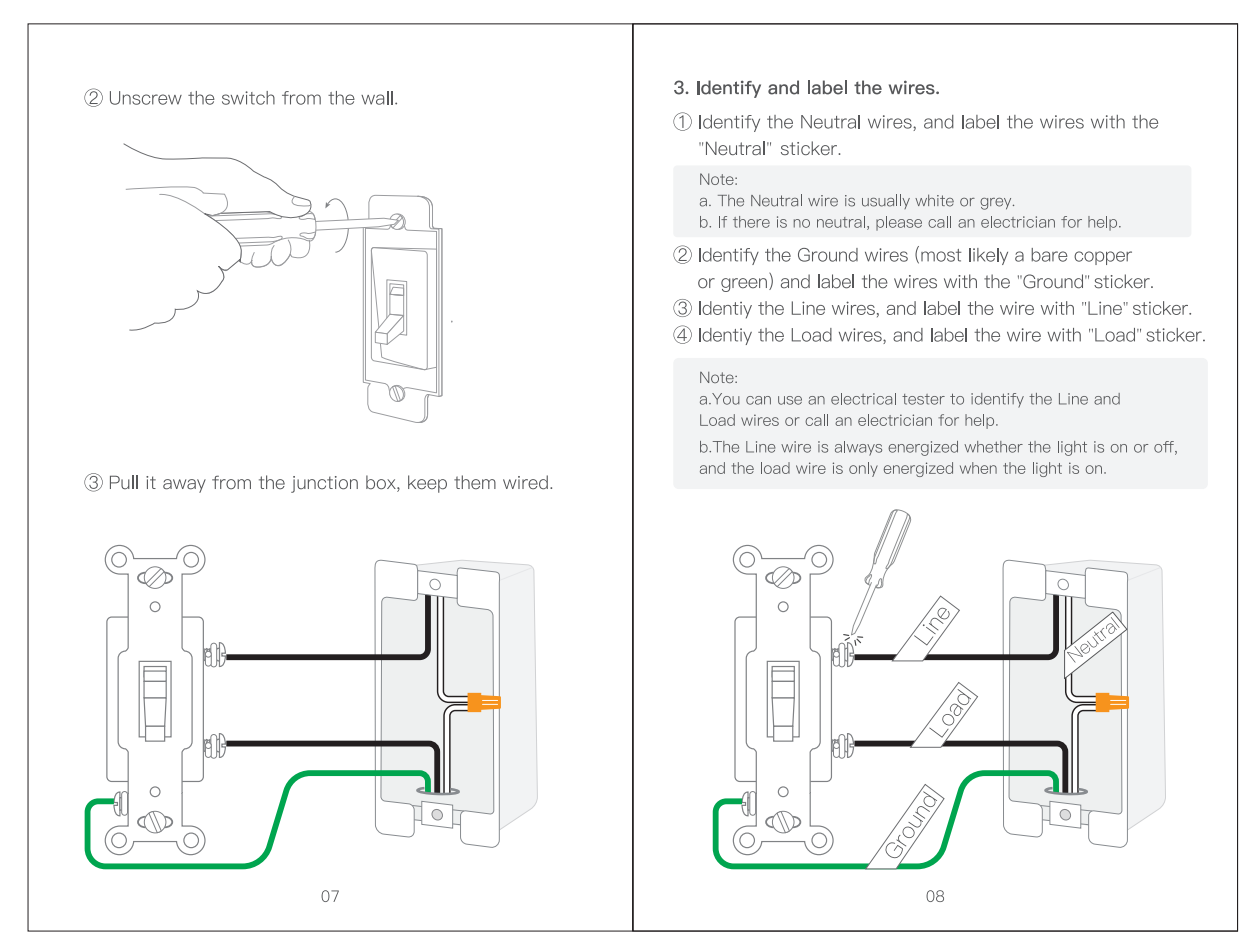
Indicator Light

Installation - A10 Smart Wi-Fi Switch

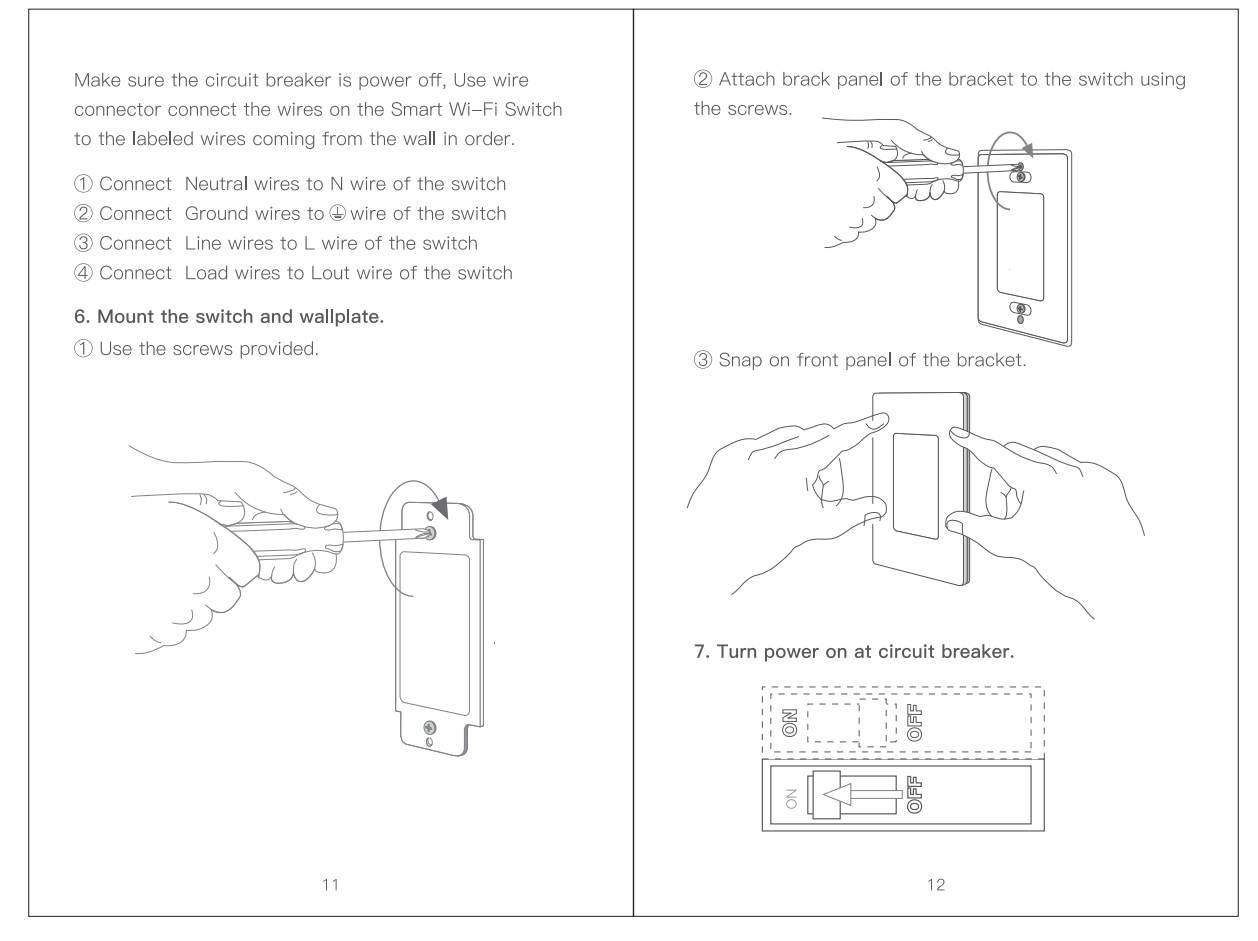
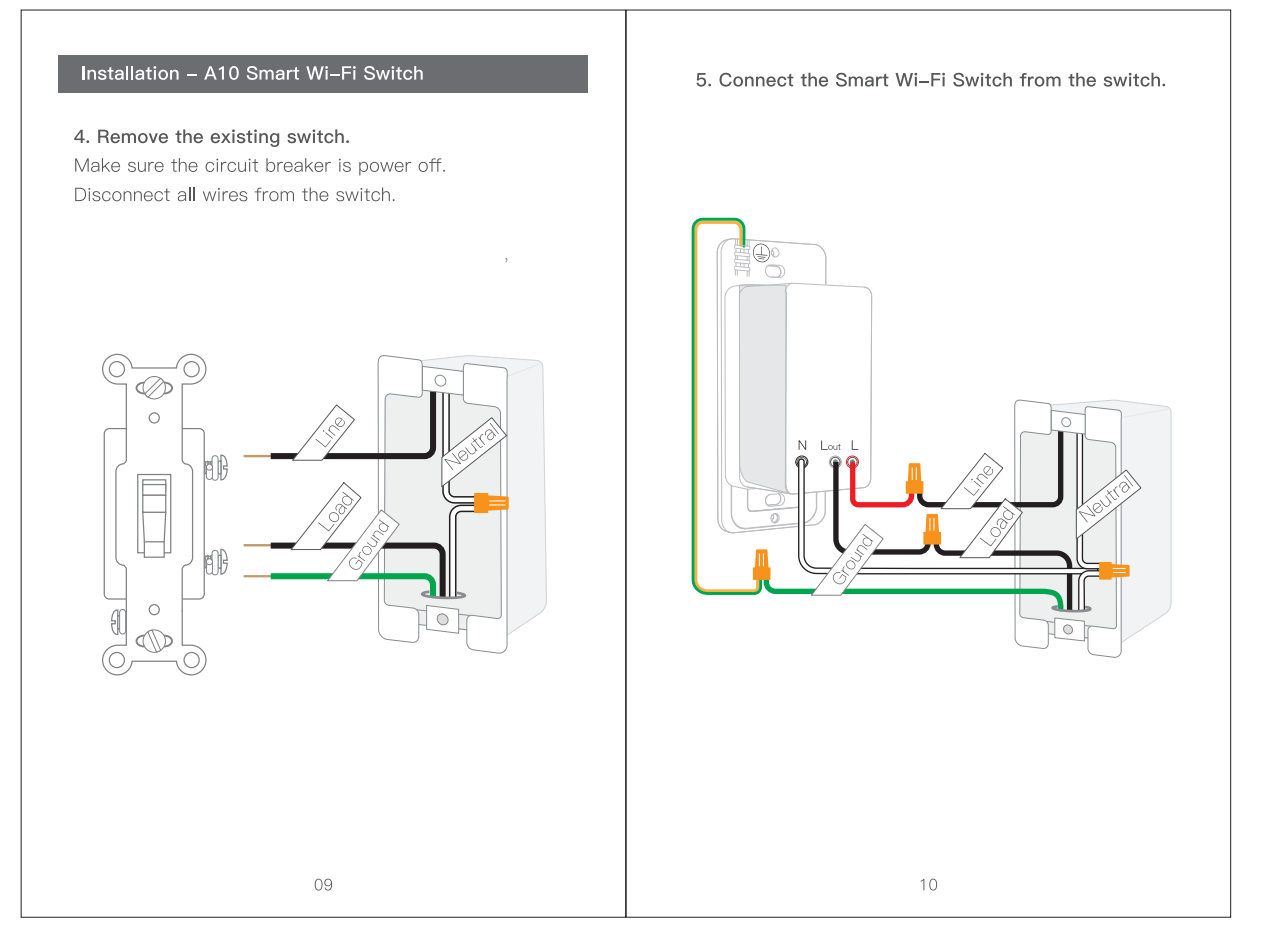
1. Turn off the power at circuit breaker!

WARNING: Shock Hazard
May result in serious injury or death.
Turn off power at circuit breaker or fuse before installing.

2. Pull out existing switch from wall.
① Remove the wallplate from the switch.



封底 封面



Download App and Register

1. Scan the QR code to download the ORVIBO Home App.

2. Go to the App Store or Google Play to download the ORVIBO Home App.

Register
Launch the ORVIBO Home App and register a new account or log in.

Add Device and Configuration

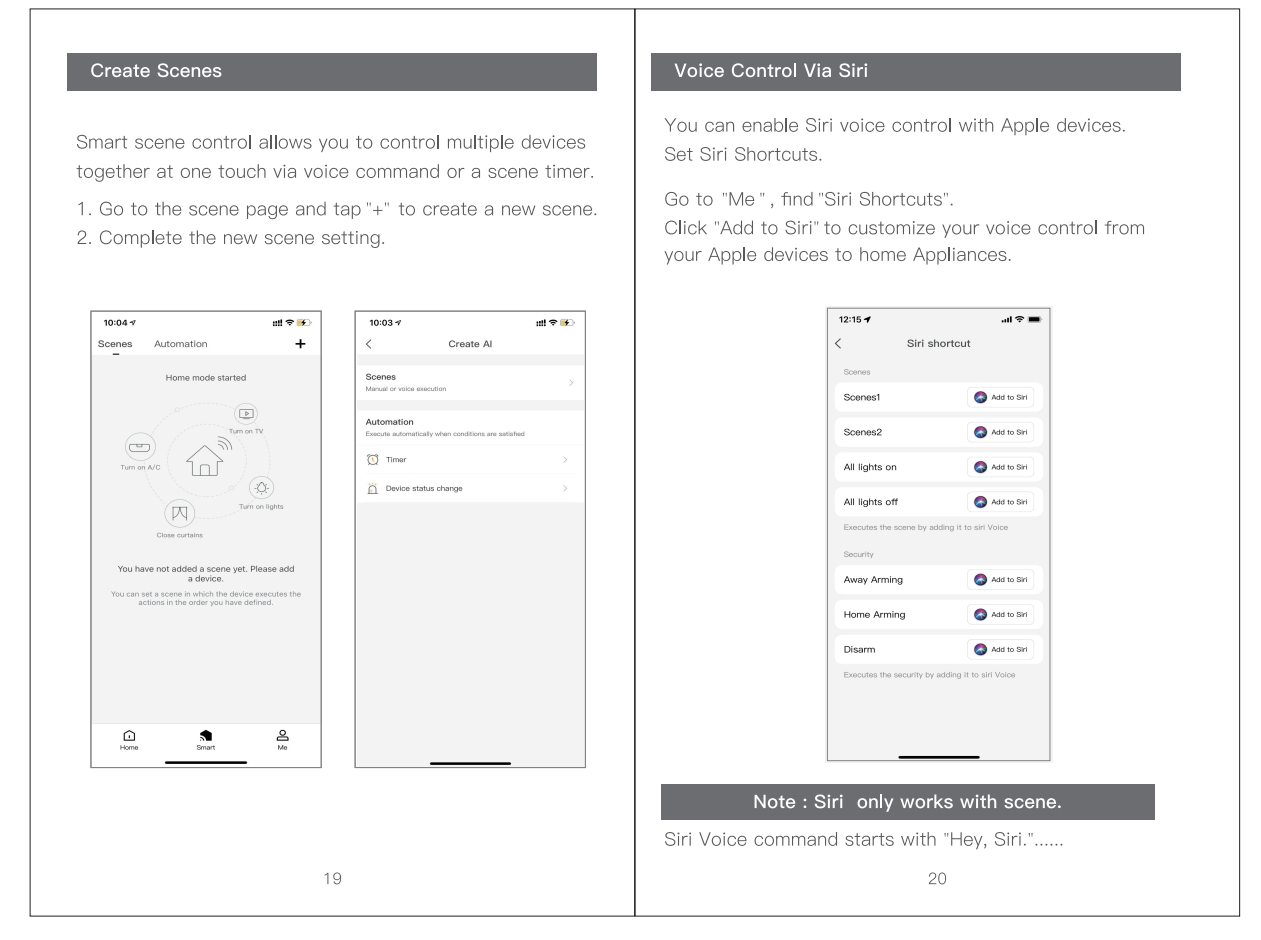
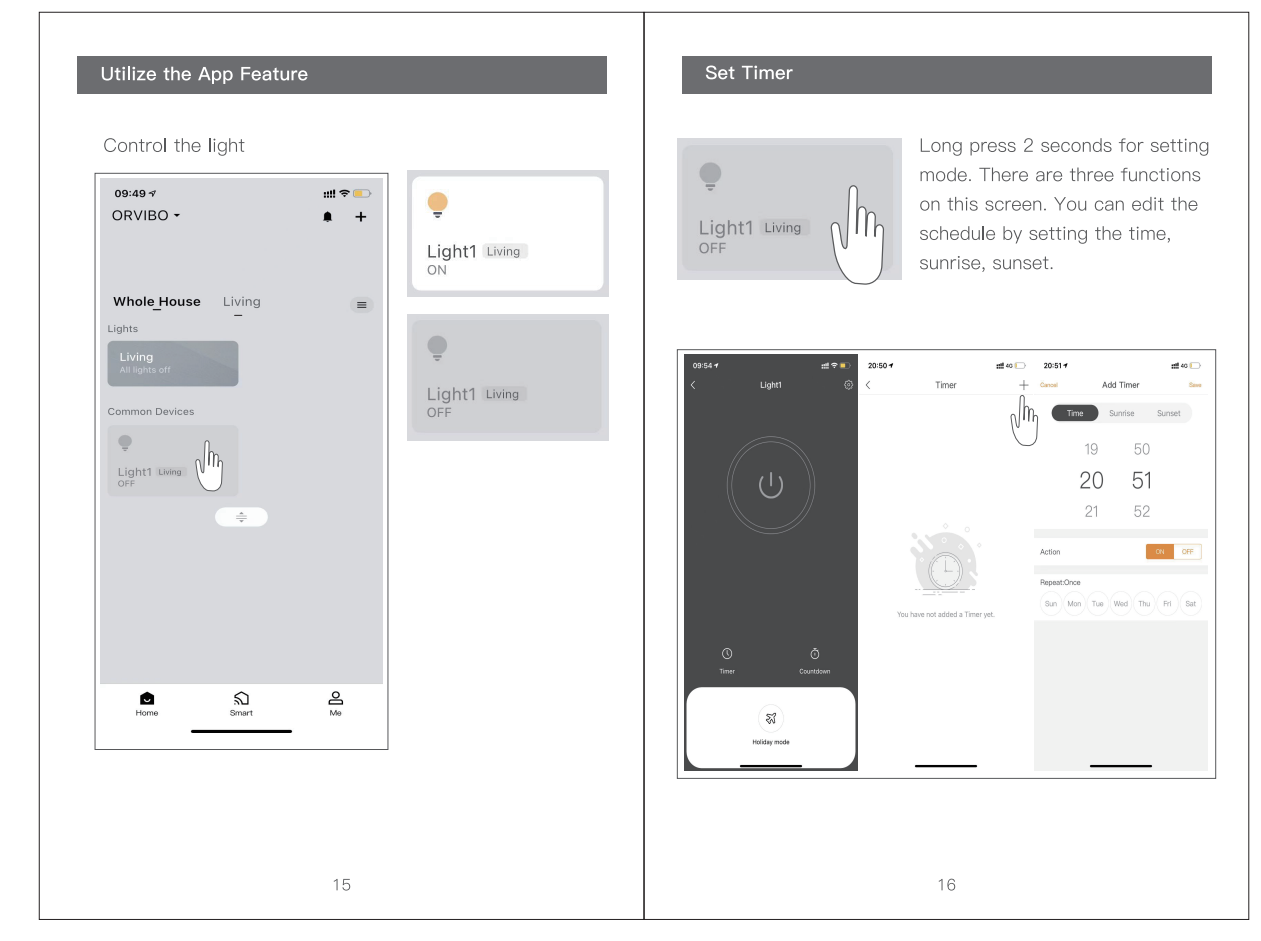
Add Device Automatically

1. Launch the ORVIBO Home App.
2. Tap power on at circuit breaker.
3. If the indicator light flashes white slowly, you can add device automatically and use the ORVIBO Home App to complete all remaining steps.

Add Device Manually

If the indicator light does not flash white slowly, you need add device manually.
1. Tap on "+" at the upper right corner at the Home page of the App.
2. Tap on "Scan QR code to add device".
3. Scan the QR code.

4. Use the ORVIBO Home App to complete all remaining steps.
Note: This switch only supports 2.4GHz Wi-Fi.



Support Amazon Alexa/Google Assistant

1. Link ORVIBO to Amazon Alexa/Google Assistant

Launch the ORVIBO Home App. Find the guide via this path: "Me" -> "Intelligent voice" -> "Smart speaker service", you can choose Amazon Alexa/Google Home for detailed instructions.

2. Control by Amazon Alexa/Google Assistant

Voice command by this: AMAZON ALEXA: Alexa, turn off the lights. Hey Google, turn off the lights.

FAQ

1. The light is not ON.
a. Light switch turned out
b. Breaker is OFF or tripped
c. Light not properly installed
d. Wrong wire

2. How to reset the device?
You can reset after the installation completed. Quickly press the turn off button repeatedly for 4 times and then press the turn off button till the white light flashes slowly indicating the device is reset successfully and needs to be configured.

3. Why does the lamp appear dim or flickering?
Some brand lamps flicker or dim if the power of lamp is low. This phenomenon is related to the structure and drive of the lamp, and is not a switch quality problem. You can replace lamps with higher power or connect safety capacitors in parallel at both terminals of the lamp.

4. Why can't find the switch when add it?
a. Confirm whether the switch enters the configuration state.
b. Re-power the power of switch and try again.

Warranty Range And Duration

One year warranty applies to most ORVIBO products unless specified at the time of purchase. Accessories included with the main device and batteries have a warranty of six months when buying ORVIBO products; the product warranty remains measured from the time it was bought by the original owner. Any other promise made by dealers beyond the guarantee of ORVIBO, ORVIBO will not assume any liability.

The following cases do not belong to free repair scope and ORVIBO will provide paid services. Please note: FR to provide warranty cards and related sales records. Clearing of product and work loss under normal circumstances such as natural loss of casing, inserting components, aging and wear.

Any product failure or damage caused by installation, usage, maintenance, and storage that are not in accordance with usage instructions. Alter or tear up batteries on products or warranty card without authorization.

For those beyond change or warranty period:
Product spiral number or type or warranty card does not match the product label. Without getting the permission of ORVIBO, change its internal structure circuit, partially, or dismantling or modifying without authorization.

Product damage caused by accident, human abuse/misuse, such as output short circuit, high-voltage input, overvoltage, high temperature, water inflow, mechanical damage, broken serious conductor or fuse and etc.

Damage caused by transportation loading and unloading on the way of return for repair.

Product failure or damage caused by force majeure such as earthquake, fire, flood lightning and so on.

Product failure or damage caused by any problem other than product design, technology, manufacturing, quality and others. Accessories are not included in free repair scope. This regulation shall come into effect since the issuing date.

ORVIBO will keep the final interpretation right and revise.

FCC

FCC Statement
This device complies with part 15 of the FCC Rules. Operation is subject to the condition that this device does not cause harmful interference.

(1) This device may not cause harmful interference.
(2) This device must accept any interference received, including interference that may cause undesired operation. Any changes or modifications not expressly approved by the party responsible for compliance could void the user's authority to operate the equipment.

Warning: Changes or modifications not expressly approved by the party responsible for compliance could void the user's authority to operate the equipment.

Note: This equipment has been tested and found to comply with the limits. This equipment has been tested and found to comply with the limits for a Class B digital device, pursuant to part 15 of the FCC Rules.
These limits are designed to provide reasonable protection against harmful interference in a residential installation. This equipment generates, uses, and can radiate radio frequency energy and, if not installed and used in accordance with the instructions, may cause harmful interference to radio communications. However, there is no guarantee that interference will not occur in a particular installation if the equipment does cause harmful interference to radio or television reception, which can be determined by turning the equipment off and on, the user is encouraged to try to correct the interference by one or more of the following measures:
- Reorient or relocate the receiving antenna.
- Increase the separation between the equipment and receiver.
- Connect the equipment into an outlet on a circuit different from that to which the receiver is connected.
- Consult the dealer or an experienced radio/TV technician for help.

FCC ID: ZAWF7-A10

- 备注:
1. 材质: 120g双哑粉纸
 2. 尺寸: 120*80(mm)
 3. 印刷: 彩色双面印刷
 4. 装订要求: 骑马钉
 5. 边框线为折痕线, 无需印刷

未注公差: ≤10mm ±0.05mm ≤50mm ±0.1mm >50mm ±0.2mm	制图 鲁枫叶	审核	批准	产品名称 北美开关A10说明书	材料
单位 mm	日期 20220322			产品料号 3.06.010830	版次 V0.4
ORVIBO TEL:+86-0755-85277097 FAX:+86-0755-85277087		深圳市欧瑞博科技股份有限公司 SHENZHEN ORVIBO TECH CO.,LTD.			